



## POINTS OF INTEREST

- Cranham Church
- The Buckholt
- Crickley Hill
- National Star College
- Devil's Chimney
- Tramway Cottage
- Gustav Holst statue
- Holst Birthplace Museum
- Pittville Gates
- Pittville Pump Room
- Queens Wood
- Belas Knap
- Guiting Power
- Bourton on the Water
- Wyck Rissington Church



Waymark

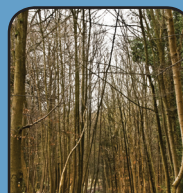
## DETOURS

- All Saints Church
- Cleeve Hill
- Spoonley Wood
- Naunton



## THE GUSTAV HOLST WAY HISTORIC WALKS IN THE COTSWOLDS

The Gustav Holst Way is a medium distance ramblers' route from Cranham to Wyck Rissington, via Cheltenham and Bourton. Each of these places has some association with the composer, and the broad stretch of Cotswold country between them was also well known to Holst, who spent many pleasant days walking in the uplands and dales.



Designed by [www.artofhouse.com](http://www.artofhouse.com)

## THE GUSTAV HOLST WAY HISTORIC WALKS IN THE COTSWOLDS

FROM CRANHAM TO WYCK RISSINGTON



Gustav Holst statue



Holst Birthplace Museum



Waymark



Wyck Rissington



Cranham

Cheltenham

Prestbury

Guiting Power

Naunton

Bourton on the Water



GUIDE OVERVIEW

*Gustav Holst*



For More Information Maps,  
Photographs and Detailed Guide, visit  
[www.holstmuseum.org.uk](http://www.holstmuseum.org.uk)

FULL GUIDE DOWNLOADABLE FROM:  
[www.holstmuseum.org.uk](http://www.holstmuseum.org.uk)

### SECTION 1: Cranham Church to Crickley Hill



5.7 miles  
2½ hours

The Gustav Holst Way starts from Cranham Church, where Holst's mother Clara played the harmonium, and continues through Cranham village and up into Cranham woods, passing two houses associated with Holst, Midwinter Cottage and Buckholt Cottage. The route then follows the Cotswold Way along the Cotswold edge, through magnificent beech woods, passing below Birdlip village. Soon, you come out of the woods to walk along the open edge with magnificent views stretching to the Welsh mountains. The section ends at the Crickley Hill country park, where there is a visitor centre and toilets.

### SECTION 2: Crickley Hill to Holst Birthplace Museum



7.2 miles  
3 hours

From Crickley Hill country park, Section two of the Gustav Holst Way continues to follow the Cotswold Way along the Cotswold edge to reach Leckhampton Hill, which towers over the southern side of Cheltenham. The route descends the hill, past the famous Devil's Chimney and down an old quarry incline, to enter Cheltenham through generally quiet suburban streets and parks. In the town centre, it passes the recent statue of Gustav Holst in Imperial Gardens, to reach the Holst Birthplace Museum on the edge of Pittville.

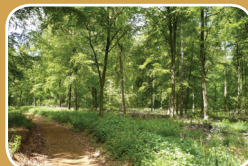
### SECTION 3: Holst Birthplace Museum to Corndean Lane



7 miles  
3 hours

From the Holst Birthplace Museum, Section three of the Gustav Holst Way heads out into the north Cotswolds. It leaves Cheltenham through Pittville Park, past the splendid Pump Room, and, skirting the Racecourse, reaches the pleasant satellite village of Prestbury. It then climbs high over the open common of Cleeve Hill, the highest point of the Cotswolds, with more magnificent views. It then passes the Neolithic long barrow of Belas Knap, to descend steeply to end on the rural Corndean Lane. From here, it is a walk of about a mile down into Winchcombe for buses and refreshments, if wanted.

### SECTION 4: Corndean Lane to Guiting Power



6.9 miles  
3 hours

From Corndean Lane, Section four of the Gustav Holst Way descends into the head of the great coombe behind Sudeley Castle, and then climbs up again to the ancient ridgeway route of the Salt Way (with an optional detour via Spoonley Wood to search for the remains of a Roman Villa). From the Salt Way, it runs through the commercial forestry of Guiting Wood and the pleasant parkland of Guiting Manor to end at the picture postcard Cotswold village of Guiting Power.

### SECTION 5: Guiting Power to Wyck Rissington



8.2 miles  
3½ hours

From Guiting Power, the fifth and final section of the Gustav Holst Way continues across open fields to the pretty village of Naunton, with its historic stone dovecot. A pleasant walk through the meadows by the river Windrush leads to the tourist mecca of Bourton on the Water, where Holst conducted the local Choral Society in the 1890s. From here, the route goes through the fascinating Iron age archaeological site and nature reserve of Salmonsbury, and then through meadows to reach Wyck Rissington, where the Gustav Holst Way ends at the Church. Holst was organist here in 1892-3, at the salary of £4 per annum!

## HOLST BIRTHPLACE MUSEUM



4 Clarence Road  
Cheltenham  
Gloucestershire  
GL52 2AY

TEL: 01242 524846  
[www.holstmuseum.org.uk](http://www.holstmuseum.org.uk)

The Regency terrace house where Gustav Holst, composer of *The Planets*, was born in 1874. The story of the man and his music is told alongside a fascinating display of personal belongings including his piano. The museum is also a fine period house showing the upstairs downstairs way of life in times past, including a working Victorian kitchen and laundry, elegant Regency drawing room and charming Edwardian nursery.